

## Pallbearers

Stewards

## Flower Bearers

Stewardesses and Choir Members

## INTERMENT

Douglas Cemetery  
Staton, Tennessee



## ARRANGEMENTS ENTRUSTED TO *Swanson Funeral Home, Inc.*

### Northwest Chapel

14751 W. McNichols  
Detroit, MI 48235  
(313) 272-9000

### Boulevard Chapel

806 E. Grand Blvd.  
Detroit, MI 48207  
(313) 923-1122

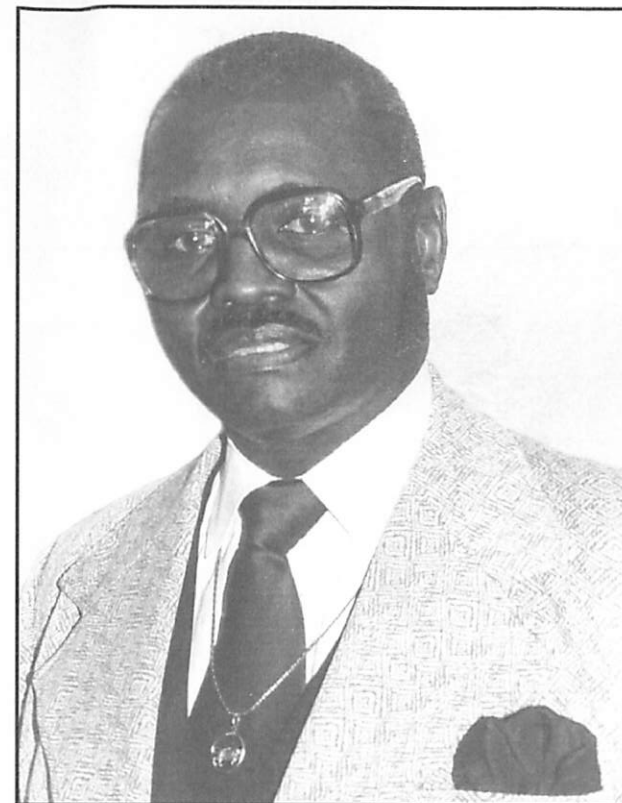
## Acknowledgment Of Appreciation

With sincere appreciation, we wish to thank our many friends for their expressions of kindness during our bereavement for our loved one. May God bless each of you. - THE FAMILY

R&L Color Graphic Printing • (313) 345-3838

May 5, 1926 - November 4, 2002

## In Loving Memory Of



## MILTON JONES

Services to be held

**Thursday, November 7, 2002**

11:00 A.M. Memorial

St. John Christian Methodist Episcopal Church  
8715 Woodward Avenue • Detroit, MI 48202  
The Rev. Dr. Tony C. Henderson, *Officiating*

**Saturday, November 9, 2002**

2:00 P.M. Visitation

Douglas Chapel C.M.E. Church  
3659 Staton - Koko Road • Staton, Tennessee



The Obituary

# MILTON JONES

**Milton Jones** was born May 5, 1926 to Nattie Sue and Ike Jones in Staton, Tennessee.

He finished grammar school there and then went to Whiteville, Tennessee where he finished high school.

Milton was called into service with the U.S. Navy and was discharged with an honorary discharge. After he returned from the Navy Milton continued his education at Lane College where he earned an education degree. He also met and married his wife Mary Murphy in 1948.

Milton taught school in his hometown of Staton, Tennessee until he and his wife decided to move to Detroit, Michigan in 1953, where he joined St. Johns C.M.E. Church.

Milton was a devoted member of St. Johns C.M.E. Church serving on the Steward Board as well as a Trustee until his health failed.

On Monday, November 4, 2002 God called his child home.

He leaves to mourn his death: a devoted wife, Mary; Emma Boles, his cousin, who was considered his sister; godson, Thomas Perry; his goddaughter, Claudette Leake; nieces, nephew as well as a host of cousins as well as his church family of St. Johns C.M.E.

## Order Of Service

- Prelude .....
- Processional .....
- Call to Worship..... Pastor Tony C. Henderson
- Solo ..... Rev. Alexander Harvey Jr.
- Prayer ..... Pastor Tony C. Henderson
- Scripture ..... Pastor Tony C. Henderson
- Solo ..... Anna Harris
- Acknowledgment of Cards, Telegrams,  
and Condolences .....
- Tributes .....
- Song ..... Rev. Alexander Harvey Jr.
- Eulogy ..... Pastor Tony C. Henderson
- Recessional .....
- Postlude .....

*I am the resurrection, and the life: he that believeth in me, though he were dead, yet shall he live: And whosoever liveth and believeth in me shall never die. St. John 11: 25-26*

**DOUGLAS CHAPEL C.M.E. CHURCH**

**Order Of Service  
For**

**November 9, 2002  
2:00 P.M.**

**Rev. Rick Rouse, Officiating**

**Processional**

**Selection**

**Choir**

**Prayer**

**Scripture**

**Words of Comfort**

**Rev. Roger A. Hopson**

**Selection**

**Choir**

**Recessional**